

understand me



# The Challenge



Business model

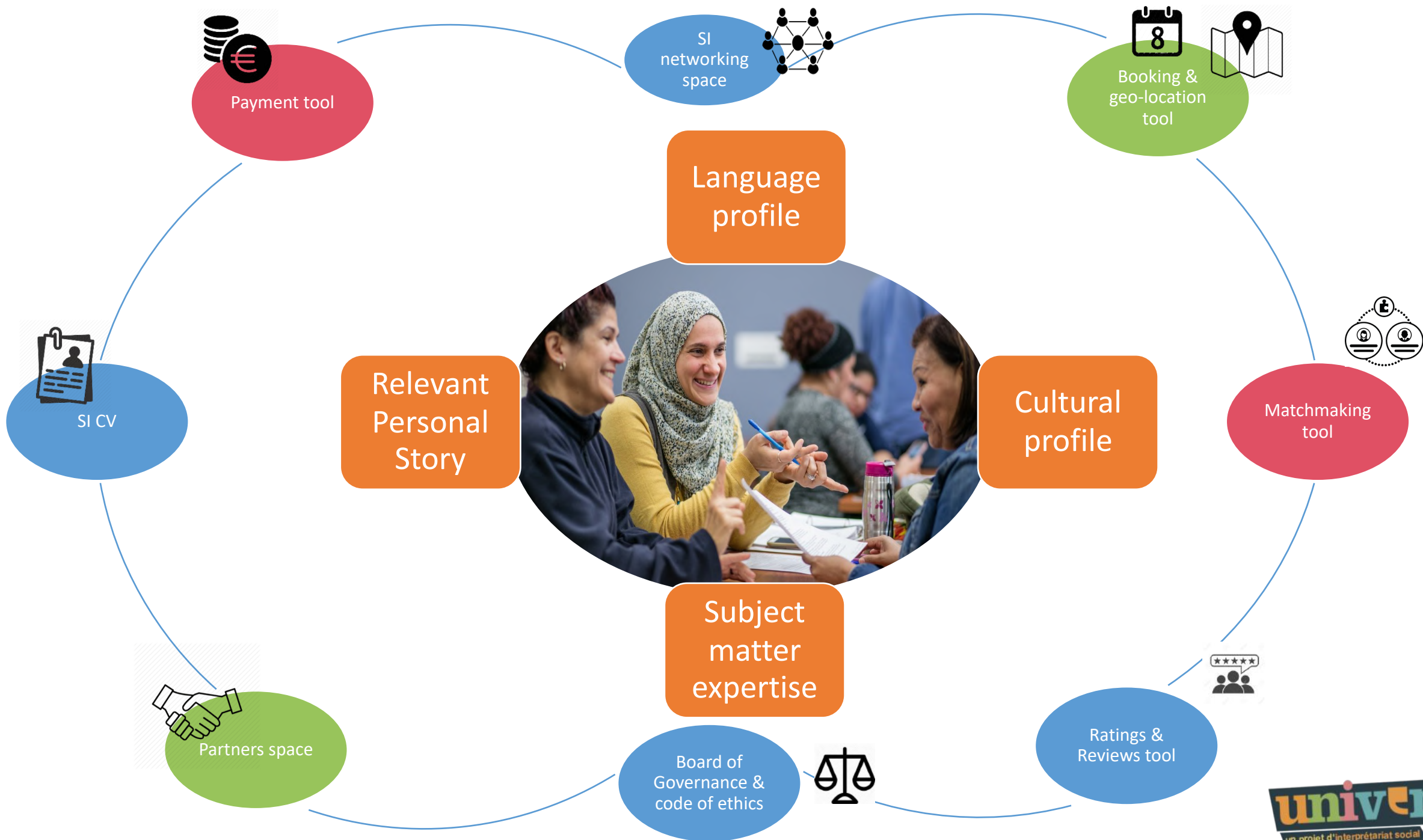
Sustainability

Resources

Awareness

# Think...







# Business model = Commission fee



## Cost structure

- Build, maintain & communicate solution:
  - salaries for developers,
  - hosting-licensing fees,
  - design,
  - amplification, app development

## Revenue streams

- Partnerships,
- Social Interpreters (Sis) services,
- Ads



# The Impact

Inclusion

Human

Cooperative  
model

The Social Interpreter Ecosystem

Satisfaction

It works!



